

PART OF THE



GROUP



**DDSL LTD**





At DDSL, we pride ourselves in being one of the few companies in our field, that can offer our Data Centre customers the complete system:

- Generation sets
- UPS equipment
- Control Panels and LV or HV Switchgear
- Synchronising and paralleling equipment
  - SCADA Control systems for BMS

We also offer installation and commissioning of complete system as well as, service and maintenance engineers who will work with you to keep the system on line and ready to deliver power.



# Who do we supply to?

- Industrial
  - Marine
  - Military
- Commercial
- Data centres
- Power utilities
- Water Authorities



Part of the



group



# Our Products

- Diesel Generators up to 4MVA per set
- Open skid format, with built in base fuel tank (8 hr)
- Full Acoustic canopy, close fit 75dBA or 85dBA
- ISO Containers 20, 30 or 40ft, acoustic down to 65dBA
- UPS equipment
- Load sharing and Mains Synchronising panels
- Switchgear, Distribution Boards and Motor Control Centres, LV and HV
- Digital Metering and Load Control Systems for Building Management
- Bulk fuel tanks, day tanks and fuel transfer systems
- Step up transformers
- Load bank



Part of the



group

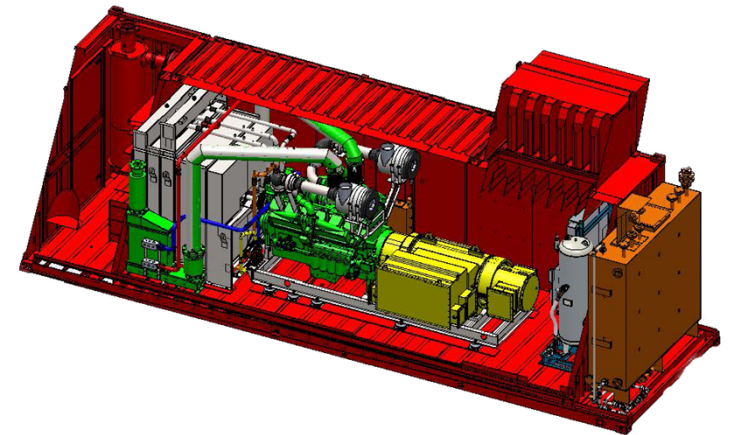
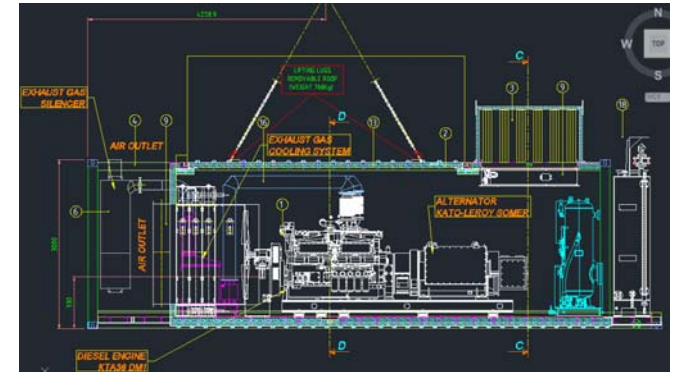
# Energy Solutions

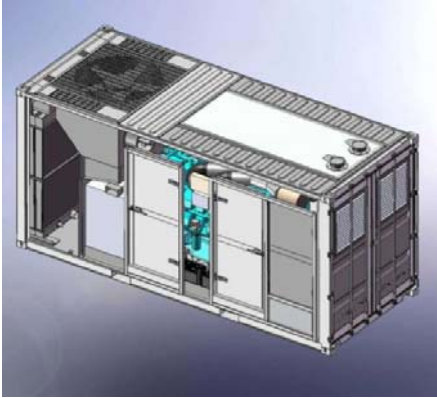
Our technical team have great experience with international specifications, such as:

ISO, API, DEP, TEMA, ASME, NACE, NEC, IEC, ATEX, CE, NFPA20  
etc.

All our products are specifically engineered through **FEA analysis**. All their parts are sized and designed (heat exchanger, pipes, structural skid, etc.)

Milantractor is specialized in solutions for **hazardous area** (especially **Zone 2**).





- Our equipment covers the range of individual generating sets, up to 4MVA, with suitable UPS systems to match.
- In-house Software Engineers, design full blown SCADA System to interface with Building Management Systems (BMS) for multiple sets operating in parallel with the mains, controlling sophisticated networks with built in maintenance programmes.
- Our Engineers will install and commission the Generating Sets, UPS Systems, Fuel Tanks and all associated Control Panels, Monitoring Systems and Switchgear.
- Once installed and working, our Service Department can set up a formal maintenance and service contract to ensure your equipment remains ready to operate at all times.
- Modern technology allows us to monitor systems remotely and call out engineers as faults occur.

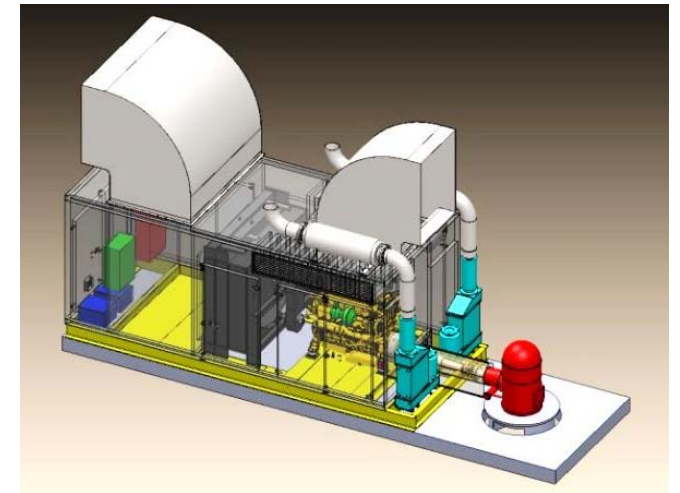
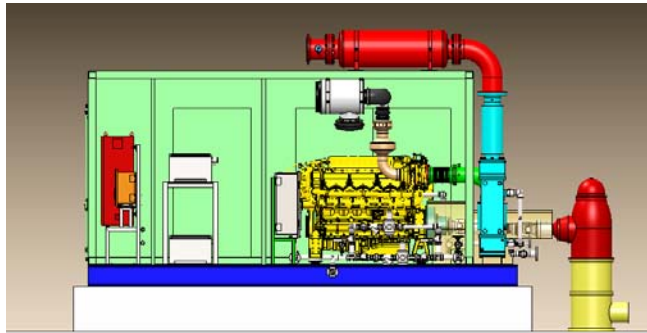
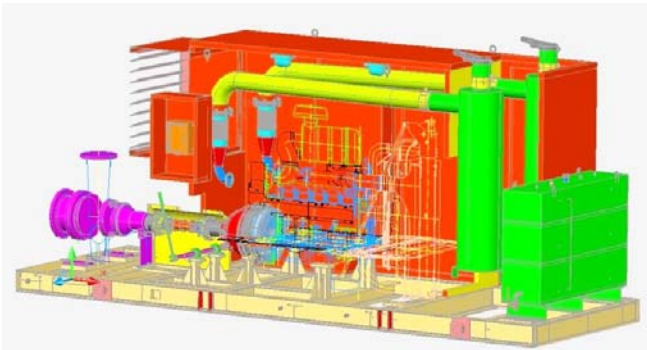






OUR  
PROJECTS

# *Fire Fighting Systems*



NFPA 20

(Not Listed – UL FM)

UNI-EN 12845

APSAD

Part of the  group





**Type : Fire Pump**

**Client : Bonatti**

**Site : Algery**

**Engine : Clarke - UF84**

**Pump : KSB - RDL 150-310**

**Notes : Medium Voltage F.F.S.**

Part of the



group





**Type** : Fire Pump

**Client** : ABB - Sonatrach

**Site** : Menzel

**Engine** : Cummins Fire Power (630 Hp)

**Pump** : Flowserve – 700 m<sup>3</sup>/h

**Notes** : Medium Voltage F.F.S.

Part of the



group

**Type** : Fire Pump

**Client** : GNL Italia

**Site** : Regasification Terminal

( La Spezia )

**Engine** : Cummins - KTA 50

**Pump** : Worthington - Flowserve

**Notes** : Hazardous Area



Part of the



group



**Type** : Apsad & Atex FFS

**Client** : Edf Group

**Site** : Dunkerque (France)

**Engine** : Caterpillar C32

**Power** : 1238 kW

**Pump** : Termomeccanica

**Notes** : 2 Vertical Engine Driven Pumps - LNG Terminal  
Under Construction





**Type :** On Train Genset for Autoballaster Wagons

**Client :** Network Rail

**Site :** UK Mainland, Track Repairs

**Engine :** Perkins 1103D

**Power :** 30 KVA

**Notes :** 21 Unites

Part of the



group





**Type** : Fire Pump

**Client** : GNL Italia

**Site** : Regasification Terminal  
( La Spezia )

**Engine** : Caterpillar 3412

**Pump** : Worthington - Flowserve

**Notes** : Atex Fire Fighting Pump





**Type :** Atex Towerlight

**Client :** Sonatrach

**Site :** Rhourde Nouss

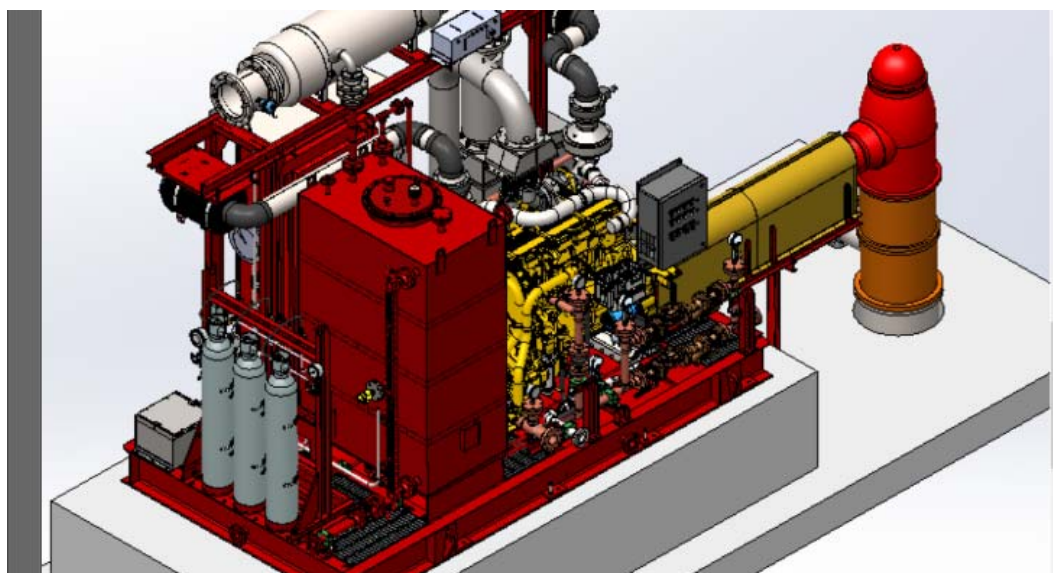
**Engine :** Perkins 404D-22G

**Notes :** 10 High pressure Sodium Iodide floodlight for Zone 1 and 2, gas and dust (400 watts).

Part of the



group



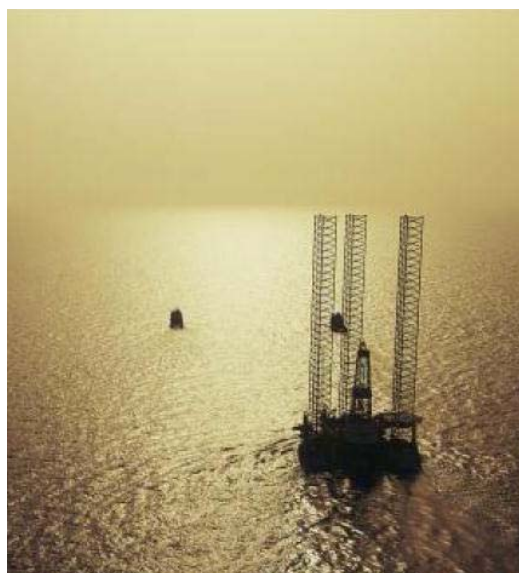
**Type :** Offshore FPS

**Client :** Foxtrot

**Site :** Offshore Ivory Coast

**Notes :** 2 Vertical Engine Driven Pumps

Gas Field Development

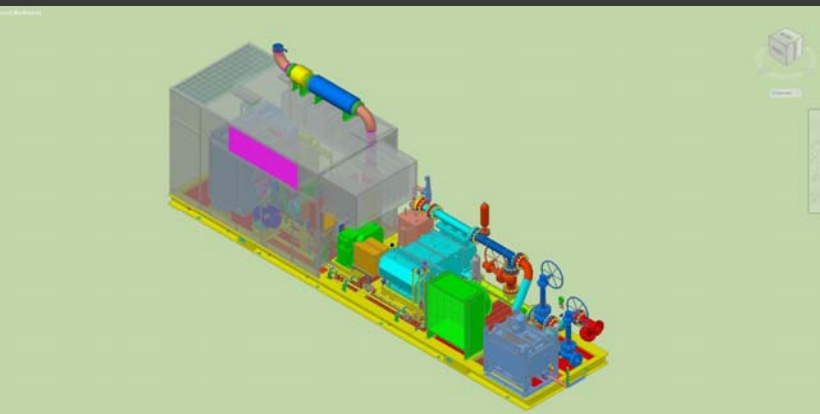
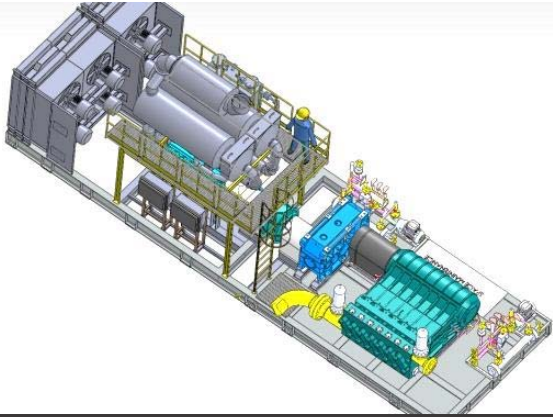


Part of the



group





# ENGINE DRIVEN PROCESS PUMPS





**Type** : Reciprocating Pump

**Client** : ABB - Kuwait Oil Company

**Site** : Crude Transit Line

**Engine** : Marine CAT - C18 (450 kW)

**Pump** : Flowserve

**Notes** : Mobile Pump, Hazardous Area

Part of the



group

**Type :** Mobile Process Pump

**Client :** Halliburton

**Site :** Escravos GTL

**Engine :** IVECO AIFO 804LI40

**Pump :** Flowserve

**Notes :** ATEX temporary start-up diesel  
pump







**Type** : Diesel Process Pump

**Client** : KAFCO

**Site** : Kuwait Airport

**Engine** : Caterpillar 3406C

**Pump** : Flowserve 6HPX15A

**Notes** : 2 ATEX Jet Fuel Injection



- **Type** : 3 ATEX Reciprocating Pumps
  - **Client** : ENI
  - **Engine** : MTU 16V2000 & 16V4000
  - **Pump** : Peroni Pompe
  - **Site** : Angola
- **Notes** : Hot Oil Pumps and Methanol Injection  
Pump mounted on a FPSO



**Type** : Process Pump  
**Client** : Thyssenkrupp  
**Site** : Alabama - USA  
**Engine** : Caterpillar - C15 (500kW)  
**Pump** : KSB - Omega (1278 m<sup>3</sup>/h)  
**Notes** : Furnace Steel Plant







# GENERATING SETS



**Type** : Generating Set  
**Client** : Impregilo Lidco  
**Site** : University of Misurata  
**Engine** : Perkins  
**Power** : 3750 kVA  
**Notes** : Synchronized Plant





**Type** : Generating Set

**Client** : Saipem

**Site** : Kashagan Plant

**Engine** : Marine Cummins - KTA38

**Power** : 1 x 1000 kVA

**Notes** : Main Power for Off Shore Marine Flat Deck Barge



**Type** : Marine Generating Set

**Client** : Ersai

**Site** : Kashagan

**Engine** : Marine Cummins - KTA38

**Power** : 4 x 1000 kVA

**Notes** : Main Network Temporary Refuge Barge





**Type** : Generating Set

**Client** : Rosetti - Total

**Site** : Central Graben Area( North S. )

**Power** : 2 x 563 kVA

**Notes** : Stand By Power for Auxiliary Loads





**Client**

Consorzio Cociv

**Site**

Polcevera ( Italy )

**Power**

12 x 800 kVA

(70 dBA @ 7 m)

(CO<200 mg/m<sup>3</sup> - NOX<500 mg/m<sup>3</sup>)

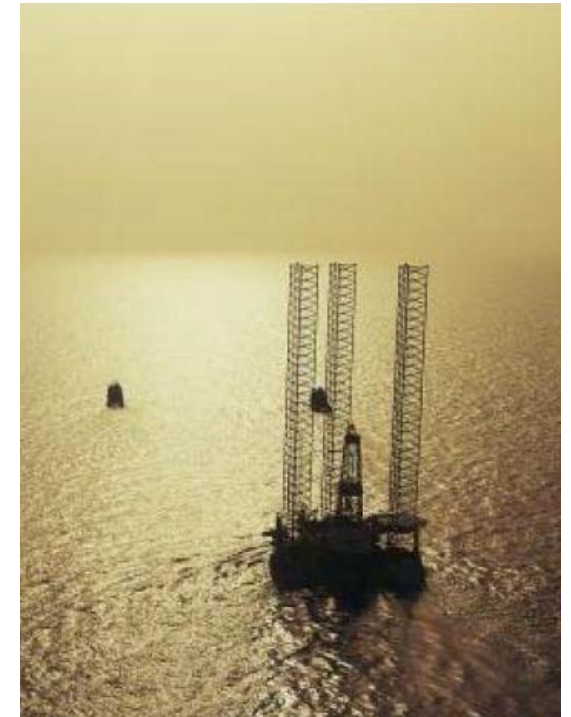
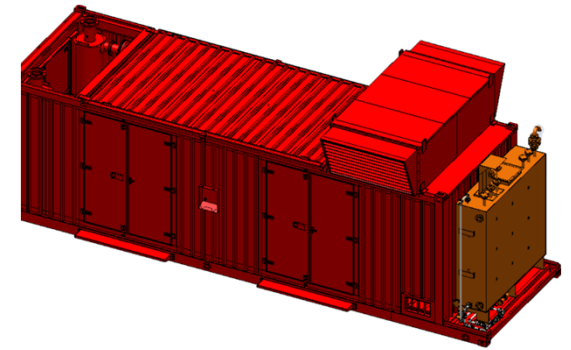
Part of the



group



**Type** : Offshore Genset  
**Client** : Foxtrot  
**Site** : Offshore Ivory Coast  
**Notes** : 1 Marine ATEX Genset  
Gas Field Development



**Client**  
Public Power Corporation

**Site**  
Greece

**Power**  
30 MW



Part of the



group



**Client**  
Enel S.p.A.

**Site**  
Cortina d'Ampezzo ( Italy )

**Power**  
2 MW - Medium Voltage



Part of the



group

1250 KVA Containerised set at 65dBA with slab fuel tank, *Thames Water UK*

3 MVA Genset, *Iraq*

400 KVA canopied genset for rubber tyre container cranes (RT6), *Worldwide*



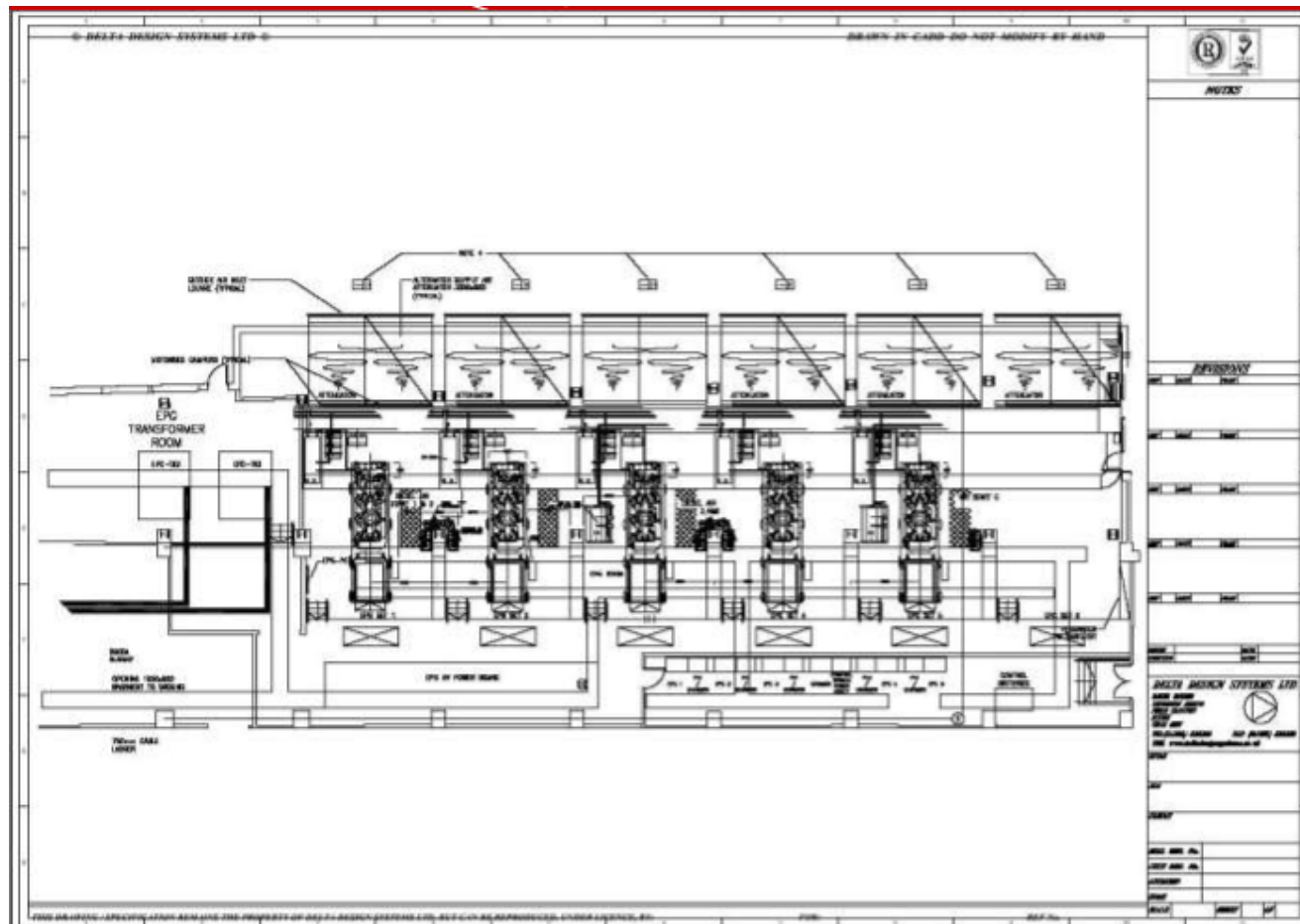


2 MVA high voltage containerised set,  
*Thames Water*

5 x 2MVA MAN Gensets, *Falklands  
Power Station*

1.5 MVA MTU containerised set, *Perth  
Hospital, Australia*





*One of 5 identical units installed in London Data Centre.  
Total power available to site 21.5MVA or 17.2MW*





*Complete projects from design, project management, civil work, building, installation and commissioning in the UK or Overseas. Above shows power station in Oman*



*Power Back up for a major teaching hospital. Set is 3.14MVA in a 30ft custom built container with acoustic level 75dbA @ 1 metre.*



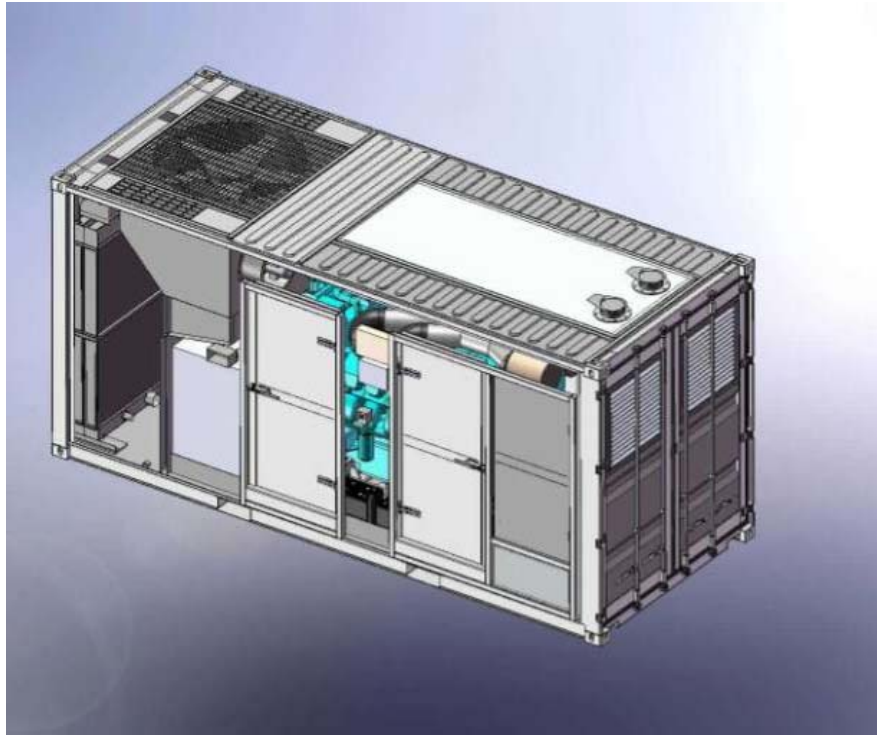




*We supply a range of Bulk Fuel tanks as well as Day Tanks, typically 100,000 litres. All Fuel transfer control systems are designed, assembled and tested in house*

*All switchgear and controls panels, both LV and HV, are bespoke design, built in house. We specialise in complex synchronising and switching controls with the philosophy of removing all 'single points of failure'*



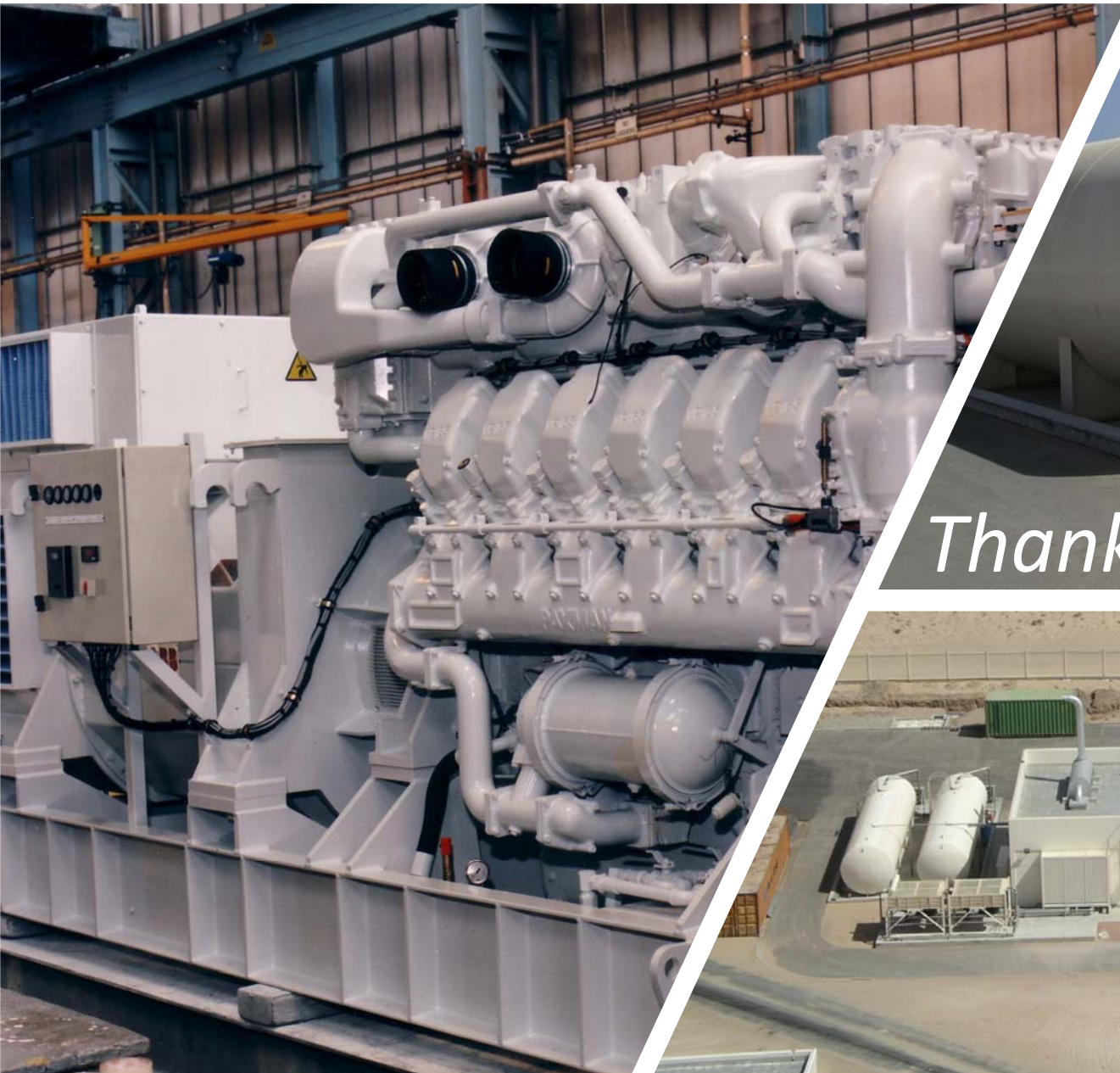


*Our newest range of compact sets, designed using the latest 3D Modelling software*



*One of 5 identical units installed in London Data Centre. Total power available to site 21.5MVA or 17.2MW*





*Thank you for your time.*

